

On Line With...

HTC
Haviland Telephone Company

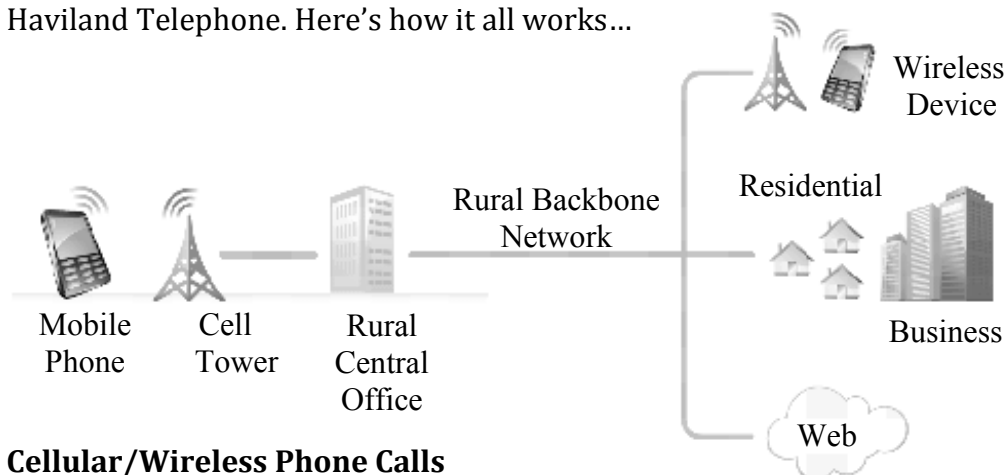
A Publication of Haviland Telephone Company, INC.

Vol.13 Issue 10

October 2011

The Reality Behind Wireless Networks

Ever use a your cell phone or smart phone on an Interstate or country highway and marvel that even in the middle of nowhere, such robust communications are available? It's as if wireless devices only need towers and clear skies to magically connect you to the rest of the world. Actually, that "connection magic" in rural America is provided by rural telephone companies like Haviland Telephone. Here's how it all works...



Cellular/Wireless Phone Calls

When you make a wireless call, it is transmitted to the nearest tower. But from there, it rides a fiber or copper land facility on a rural telephone company's backbone network to that company's central office. And from there, it goes to the rest of the world, whether it's another mobile device, home phone, or business line.

Cellular/Wireless Data

A rural telephone company's backbone is also required for the never ending stream of data to and from your mobile phone, including text messages, emails, and web access.

Wireless (Wi-fi) Internet Access

When you connect to the Internet through a wireless network from your computer, the signal isn't transmitted to a tower, but instead, it's sent to a wireless hub installed in a home or business. But like a tower, that hub also relies on a rural telephone company's backbone to send and receive your data. The FCC's National Broadband Plan is taking center stage among all rural telephone companies; many think wireless will be the way of the future and landlines will be extinct. The world is indeed going wireless. But wireless simply doesn't work without the foundation of the existing physical wired (landline) network. Without continued support to maintain our wired backbone, the wireless network is at risk as well. For more information on the National Broadband Plan and its impact on rural communications, please visit www.saveruralbroadband.org.

Source: <http://realityofwireless.com/>



104 N Main, Haviland
620-862-5211 or 800-339-8052

Conway Springs Office
211 W. Spring

620-456-2211 or 800-287-7905

Office Hours:

Monday - Friday 8:00 AM - 5:00 PM

Office Closed Saturday,
Sunday and Holidays

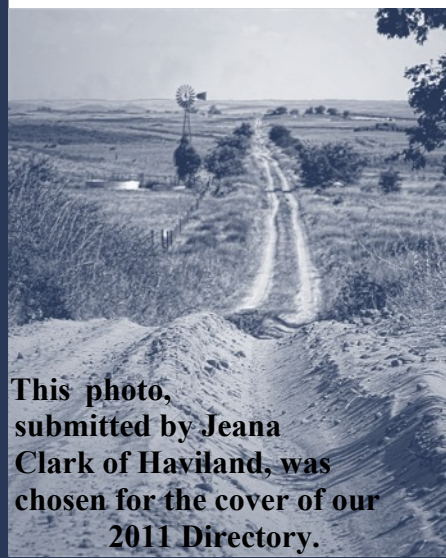
www.havilandtelco.com

For Service After Hours Call:

Haviland Office - 800-339-8052

Conway Springs - 800-287-7905

Congratulations Jeana!



This photo,
submitted by Jeana
Clark of Haviland, was
chosen for the cover of our
2011 Directory.

